



Slater Investments

Fund Objective

The investment objective of the Slater Growth Fund is to achieve long-term capital growth by investing in attractively priced companies that exhibit superior, sustainable growth potential.

The Fund

| | |
|---------------------|------------------|
| Manager Name: | Mark Slater |
| Launch Date: | 31/12/2012 |
| Launch Offer Price: | 100.00p |
| Fund Size: | £714.70m |
| IA Sector | UK All Companies |
| Price Information | |
| Single Price: | 664.05p |
| Unit Type | Accumulation |
| Pricing: | Daily |

Charges

| | |
|---------------------|-------|
| Initial Charge: | None |
| OCF (includes AMC): | 0.79% |
| AMC: | 0.75% |

OCF = Ongoing Charges // AMC = Annual Management Charge. Visit our [website](#) for a detailed explanation.

Dealing

| | |
|---------------------|------------|
| Frequency: | Daily |
| Minimum Investment: | £5,000,000 |
| Subsequent Minimum: | £1,000 |

Identifiers

| | |
|--------|--------------|
| ISIN: | GB00B7T0G907 |
| SEDOL: | B7T0G90 |



Signatory of:



Slater Growth Fund – P Accumulation

Fund Fact Sheet

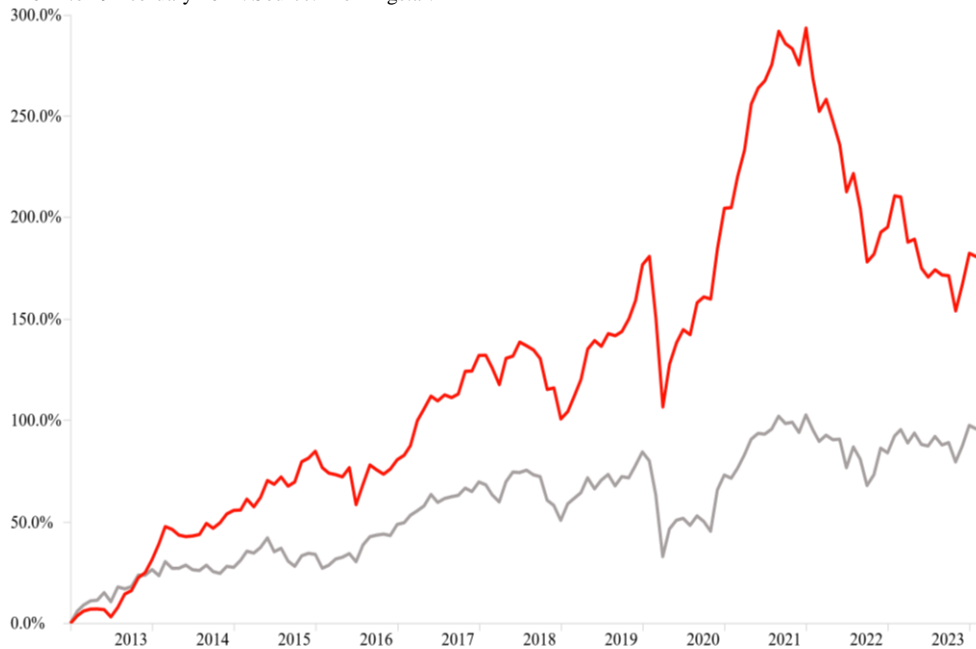
29 February 2024



Mark Slater, CIO

Fund Performance

Performance of the Fund and the IA sector on a mid price with all net income reinvested from 31 December 2012 to 29 February 2024. Source: Morningstar.



– Slater Growth P Acc

– IA UK All Companies

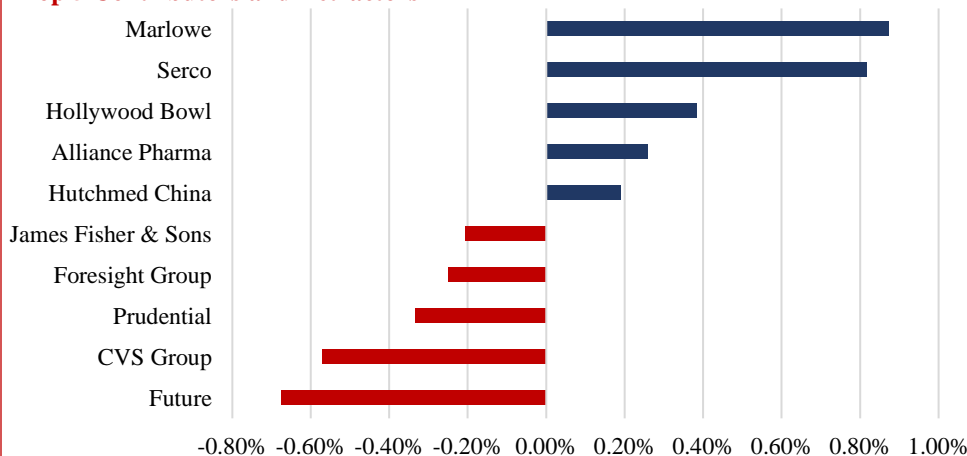
Cumulative Performance

Cumulative performance of the Fund and the IA sector on a mid price with all net income reinvested to 29 February 2024. Source: Slater Investments Ltd. and Morningstar.

| Period | 1m | YTD* | 1y | 3y | 5y | SI** |
|-----------|--------|--------|--------|---------|---------|----------|
| Fund | +0.41% | -0.19% | -9.11% | -11.95% | +33.11% | +180.91% |
| IA Sector | -0.11% | -0.99% | +0.08% | +10.92% | +21.13% | +90.72% |

*YTD = Year To Date **SI = Since Inception

Top 5 Contributors and Detractors

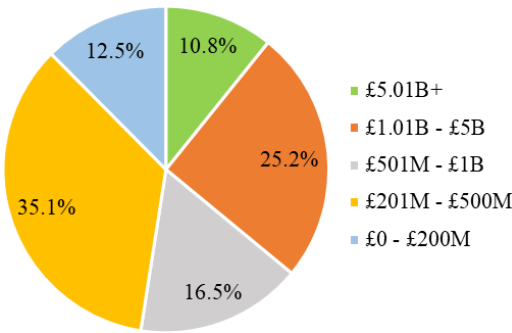


Contribution for the period 1 February 2024 to 29 February 2024 on a bid to bid basis using the 16:30 closing prices of stocks. The Fund is priced on a mid to mid basis at midday. Therefore, the graph above is only illustrative of where the contribution has come from and should not be regarded as absolute. Source: Slater Investments Ltd.

Please read the risk warning overleaf. Past performance is not necessarily a guide to the future. The value of your investment can go down as well as up; you could receive back less than you have invested.

Market Capitalisation Breakdown

Market capitalisations of Fund holdings are calculated using closing prices of the last business day of the month and exclude cash. Source: Slater Investments Ltd. and Refinitiv Eikon



Discrete Year Performance

Percentages are calculated using the mid price for the year February to February with net income reinvested. Source: Slater Investments Ltd. and Morningstar

| Period | Slater Growth Fund P Accumulation | IA OE UK All Companies |
|-------------------------|--------------------------------------|---------------------------|
| 28/02/2023 - 29/02/2024 | -9.11% | +0.08% |
| 28/02/2022 - 28/02/2023 | -11.97% | +3.06% |
| 28/02/2021 - 28/02/2022 | +10.05% | +7.54% |
| 29/02/2020 - 28/02/2021 | +27.89% | +8.09% |
| 28/02/2019 - 29/02/2020 | +18.21% | +1.03% |

Top 10 Holdings Out of 49

| Instrument | % |
|---------------------|-------|
| Serco | 8.85% |
| Next 15 Group | 5.97% |
| Prudential | 5.27% |
| JTC | 4.65% |
| Tesco | 4.02% |
| Foresight Group | 3.38% |
| Future | 3.35% |
| CVS Group | 3.19% |
| Marlowe | 2.85% |
| Team Internet Group | 2.82% |

All Sectors

| Sector | % | Sector | % |
|-------------------------------------|--------|------------------------------------|--------|
| Asset Management & Custody Banks | 12.38% | IT Consulting & Other Services | 3.77% |
| Environmental & Facilities Services | 8.85% | Internet Services & Infrastructure | 3.25% |
| Advertising | 8.79% | Health Care Facilities | 3.19% |
| Research & Consulting Services | 8.32% | Leisure Facilities | 2.70% |
| Life & Health Insurance | 5.27% | Restaurants | 2.07% |
| Publishing | 4.33% | Diversified Support Services | 2.05% |
| Construction Materials | 4.26% | Specialised Consumer Services | 1.95% |
| Pharmaceuticals | 4.11% | Broadcasting | 1.91% |
| Food Retail | 4.02% | Other | 14.31% |

Calculated using the 16:30 closing prices of stocks on a bid basis. Source: Slater Investments Ltd.

Contact Details

| Slater Investments Limited | To deal in the Fund: | General Enquiries: |
|--|-----------------------------|----------------------------|
| Nicholas House, 3 Laurence Pountney Hill | JTC Fund Services (UK) Ltd. | Lisa Letham |
| London, EC4R 0EU | +44 (0) 203 893 1001 | +44 (0) 207 220 9365 |
| www.slaterinvestments.com | Slater.dealing@jtcgroup.com | lisa@slaterinvestments.com |

Risk Warning: Past performance is not necessarily a guide to the future. The value of investments and the income from them may go down as well as up. Investors may not receive back their original investment. The Fund has a concentrated portfolio which means greater exposure to a smaller number of securities than a more diversified portfolio. Charges are not made uniformly throughout the period of the investment. This Fund invests in smaller companies and carries a higher degree of risk than funds investing in larger companies. The shares of smaller companies may be less liquid and their performance more volatile over shorter time periods. The Fund can also invest in smaller companies listed on the Alternative Investment Market (AIM) which also carry the risks described above. The Fund may invest in derivatives and forward transactions for the reduction of risk or costs, or the generation of additional capital or income with an acceptably low level of risk which is unlikely to increase the risk profile of the Fund significantly. This

document is provided for information purposes only and should not be interpreted as investment advice. If you have any doubts as to the suitability of an investment, please consult your financial adviser.

The latest Key Investor Information Document and Prospectus are available free of charge from Slater Investments Ltd and on their website. You are required to read the Key Investor Information Document before making an investment. Telephone calls may be recorded. Slater Investments Ltd, which is authorised and regulated by the Financial Conduct Authority, is the manager of the Slater Growth Fund. Slater Investments Ltd address is Nicholas House, 3 Laurence Pountney Hill, London, EC4R 0EU.