

31 December 2023

This document is intended for use by individuals who are familiar with investment terminology. Please contact your financial adviser if you need an explanation of the terms used.

The Fund is designed to deliver long-term growth, primarily as part of a lifestyle profile. A lifestyle profile automatically switches you from a growth fund into other funds that may be considered appropriate for how you choose to access your money.

The Fund will invest through other funds, selected from across the industry. These funds will predominantly invest in equities (company shares), and may also invest in other assets such as bonds (loans to a government or a company), property, money market instruments, alternatives and other unlisted assets. The funds and the amounts invested in each may change from time to time to ensure we meet the long term aims of the Fund. The investments in these funds can be from around the world, including from emerging markets and could be passively or actively managed.

The Fund will invest predominantly in funds that use strategies that take into account responsible investment issues which could impact investment performance and may exclude certain types of company that don't meet specific responsible investing criteria. Further details can be found on www.standardlife.co.uk/investments/guides/responsible-investing.

The value of investments within the Fund can fall as well as rise and is not guaranteed – you may get back less than was paid in. The funds may use derivatives for the purpose of efficient portfolio management, reduction of risk or to meet its investment objectives if this permitted and appropriate. The Sterling value of overseas assets held in the Fund may fall or rise as a result of exchange rate fluctuations.

Fund Code
LPNL

Launch Date
December 2020

Current Fund Size
£4.2 billion
(as at 31 December 2023)

This investment has a volatility rating of 5

Higher volatility ratings have greater potential for higher investment returns over the long run. But, higher volatility funds are also more likely to suddenly fall or rise in value. Volatility is just one type of investment risk that you should consider when making investment decisions.

you are here



This investment has changed by:

Here's how the Sustainable Multi Asset Growth Pension Fund has performed to 31 December 2023.

11.8%
1 year

14.5%
3 year

Performance since launch



Source: FE fundinfo from 14/12/2020 to 31/12/2023

Growth based on £100 investment.

Figures quoted are calculated over the stated period on a bid to bid basis with gross income reinvested and are based on units which contain an Annual Management Charge (AMC) of 0.98% and Additional Expenses of 0.01%, i.e. a Total Fund Charge of 0.99%. For the relevant charges on your policy, including any rebates or discounts that may apply, please refer to your policy documentation.

— Standard Life Sustainable Multi Asset Growth Pension Fund

The table below shows individual 12-month periods

Year-on-year performance	Year to 31/12/2019	Year to 31/12/2020	Year to 31/12/2021	Year to 31/12/2022	Year to 31/12/2023
Standard Life Sustainable Multi Asset Growth Pension Fund	—	—	15.0%	-10.9%	11.8%

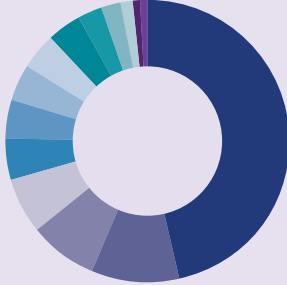
Source for all data provided by FE fundinfo: The information shown relates to the past. Past performance is not a guide to the future. The value of your investment can go down as well as up. For the relevant charges on your policy please refer to your policy documentation.

Having a mix of different types of investments could be a good thing

Investments are affected in different ways by different factors. What's positive for one investment can be negative for another, and when one rises, another can fall. Having a mix of investments across different geographic locations and investment types can help to smooth returns. This means the total value should be less likely to go up and down significantly than if you were invested in a single location or type of investment.

This Fund invests in a mix of other funds to spread your investments

Here's a list of them with their factsheets. To find out more information on what we invest in, please refer to the fund fact sheet link on the right.



Composition of Portfolio by Fund	Fund %	Fund fact sheet link
Standard Life Sustainable Index US Equity Pension Fund	46.6	Download
Standard Life Sustainable Index European Equity Pension Fund	9.8	Download
Standard Life Sustainable Index UK Equity Pension Fund	8.0	Download
Standard Life Sustainable Index Asia Pacific (ex Japan) Equity Pension Fund	6.3	Download
SL PUTM Bothwell Emerging Market Debt Unconstrained Pension Fund	4.6	Download
Standard Life Sustainable Index Emerging Market Equity Pension Fund	4.5	Download
SL abrdn Short Dated Global Corporate Bond Tracker Pension Fund	4.2	Download
Standard Life Sustainable Index Japan Equity Pension Fund	4.1	Download
SL Sustainable Global Property Securities Asset Fund	4.0	Download
SL Vanguard Global Corporate Bond Index Pension Fund	2.7	Download
Standard Life Property Pension Fund	2.3	Download
SL Vanguard UK Investment Grade Bond Index Pension Fund	1.5	Download
SL PUTM Bothwell Global Bond Pension Fund	0.7	Download
SL abrdn Global Inflation-Linked Bond Tracker Pension Fund	0.7	Download

The investment performance you will experience from investing in the Standard Life version of the fund will vary from the investment performance you would experience from investing in the underlying fund directly. This will be as a result of a number of differences, such as charges, tax and timing of investment. Figures may not add to 100% due to rounding.

Source: Standard Life 31 December 2023

It invests in different types of investments from across the world



	Fund %
UK	11.7
North America	46.8
Europe	9.8
Japan	4.0
Asia (Excluding Japan)	6.2
Emerging Markets	9.0
Money Market instruments	0.0
Global	12.4

Source: Standard Life 31 December 2023.
Figures may not add to 100% due to rounding.

Money Market: This may include bank and building society deposits, other money market instruments such as Certificates of Deposits (CDs), Floating Rate Notes (FRNs) including Asset Backed Securities (ABSs) and allowances for tax, dividends and interest due if appropriate.

It invests responsibly while still aiming for growth



79.3% of your fund is invested in responsible investment equity strategies.

There are many different ways to invest responsibly. We're focused on growing your pension pot so we'll look at the areas of responsible investing that we believe can achieve this. This means we'll seek to avoid investing in companies that could present a risk; for example, those involved in activities such as controversial weapons or tobacco production. We'll also invest more in companies that could provide an opportunity, like those focused on carbon reduction and green technology.

Standard Life uses third party managers to manage the funds with responsible investment strategies.



It excludes investing in companies that could present a risk

79.3% of your fund is invested in responsible investment equity strategies.

Our responsible investment equity strategies (79.3% of the fund) are mainly passively managed, which is where a fund manager aims to match the performance of a benchmark. You might also see this referred to as index tracking.

The table below shows how the index used (called the parent index) has been adjusted to meet our responsible investing criteria. The parent index weight shows the percentage of the largest companies that have been excluded to meet our responsible investment criteria and provides the reasons why:

Name	Sector	Parent Index Weight %	UN Compact Failure/Severe Controversies	Thermal Coal & Unconventional Oil & Gas	Controversial Weapons	Nuclear Weapons	Tobacco Production Distribution
SL Sustainable Index US Equity Fund – Largest Exclusions							
Chevron Corporation	Energy	0.64					
Boeing Company	Industrials	0.35					
Philip Morris International Inc.	Consumer Staples	0.35					
SL Sustainable Index UK Equity Fund – Largest Exclusions							
Glencore plc	Materials	2.26					
British American Tobacco p.l.c.	Consumer Staples	2.23					
BAE Systems plc	Industrials	1.55					
SL Sustainable Index Japan Equity Fund – Largest Exclusions							
Japan Tobacco Inc.	Consumer Staples	0.85					
Seven & I Holdings Co., Ltd.	Consumer Staples	0.82					
Kansai Electric Power Company, Incorporated	Utilities	0.26					
SL Sustainable Index European Equity Fund – Largest Exclusions							
Airbus SE	Industrials	1.11					
Safran SA	Industrials	0.73					
RWE AG	Utilities	0.35					
SL Sustainable Index Emerging Market Equity Fund – Largest Exclusions							
Vale S.A.	Materials	0.77					
Larsen & Toubro Ltd.	Industrials	0.40					
ITC Limited	Consumer Staples	0.24					
SL Sustainable Index Asia Pacific (ex Japan) Equity Fund – Largest Exclusions							
BHP Group Ltd	Materials	2.37					
Larsen & Toubro Ltd.	Industrials	0.39					
ITC Limited	Consumer Staples	0.23					

Source: Data provided by Standard Life to 31 December 2023 using source data provided by abrdn.



It invests in companies that could provide good responsible investment outcomes

79.3% of your fund is invested in responsible investment equity strategies.

Companies that have good environmental, social or governance (ESG) credentials have been shown to have more efficient operating models and strong financial performance.

That's why the investment approach for the responsible investment equity strategies (79.3% of the fund) is tilted towards options that could lead to more positive ESG outcomes. To find out more information on what we do invest in, please refer to the fund fact sheet links on page 2.

Responsible Investment Outcomes

Reduce carbon intensity	Reduce potential carbon emissions	Improve green revenue
44.9% Lower Carbon intensity relative to the parent indices against a target of 50%	81.5% Lower Carbon emissions relative to the parent indices against a target of 50%	50.8% Higher Green revenue relative to the parent indices against a target of 50%

Source: Figures calculated by Standard Life based on source data provided by abrdn as at 31 December 2023.

Carbon intensity: is a measure of carbon emissions which includes both direct and indirect emissions (known as Scope 1 and Scope 2 emissions).

Carbon emissions: or CO₂ emissions are the measure of all the greenhouse gases that are being released from an activity such as burning of coal, gas or oil, and the production of products and materials such as steel and cement.

Green revenue: is a measure of a company's income from sustainable activities, for example clean technology.

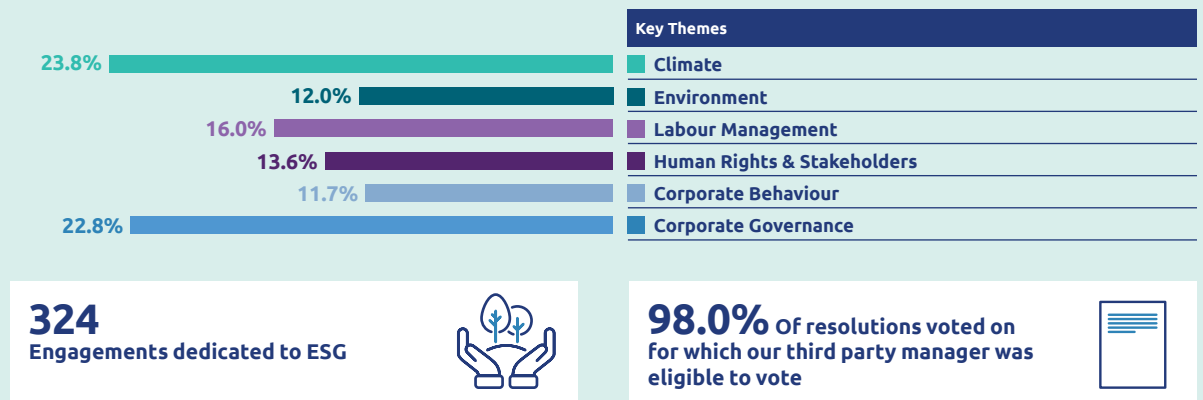


It aims to influence companies to change for the better

79.3% of your fund is invested in responsible investment equity strategies.

Investment stewardship is about engaging with companies to understand all the risks and opportunities they present, to help promote their long-term success. Investment managers can do this by talking to companies they invest in to encourage better responsible investing policies and conduct and by using their voting rights.

Our stewardship approach applies to investments in equities (stocks and shares) and bonds (also known as fixed income). It doesn't currently cover property or private market investments (investments that aren't available to individual investors). Across the responsible investment equity strategies (79.3% of the fund), our third party manager interacted with 88 companies and had 324 engagements on the key themes shown in the chart below:



Source: Figures calculated by Standard Life based on source data provided by abrdn as at 31 December 2023. Figures calculated based on holding's at period end date. Data limitations may result in an underestimation of the number of engagements. Data for the period 31/12/2022 to 31/12/2023.

Any data contained herein which is attributed to a third party ("Third Party Data") is the property of (a) third party supplier(s) (the "Owner") and is licensed for use by Standard Life. Third Party Data may not be copied or distributed. Third Party Data is provided "as is" and is not warranted to be accurate, complete or timely. To the extent permitted by applicable law, none of the Owner, Standard Life or any other third party (including any third party involved in providing and/or compiling Third Party Data) shall have any liability for Third Party Data or for any use made of Third Party Data. Past performance is no guarantee of future results. Neither the Owner nor any other third party sponsors, endorses or promotes the fund or product to which Third Party Data relates.

Standard Life

Part of Phoenix Group

www.standardlife.co.uk

Phoenix Life Limited, trading as Standard Life, is registered in England and Wales (1016269) at 1 Wythall Green Way, Wythall, Birmingham, B47 6WG.

Phoenix Life Limited is authorised by the Prudential Regulation Authority and regulated by the Financial Conduct Authority and the Prudential Regulation Authority.

Phoenix Life Limited uses the Standard Life brand, name and logo, under licence from Phoenix Group Management Services Limited.

LPNL 0224 CS00539 © 2024 Phoenix Group Management Services Limited. All rights reserved.